

# Biomonitoring Capabilities



Luna Labs has developed the Extended Physiologic Interfacing Platform (EPIP), a low-power, military-grade sensor platform that has been adapted for a wide range of bio-interfacing and bio-monitoring applications.

## Features include

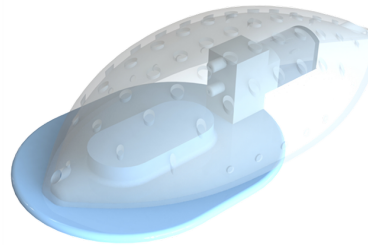
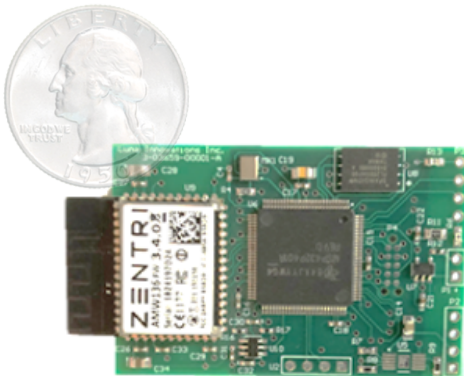
- **Secure**, encrypted wireless and wired data transfer
- **Low-power** modes for extended battery lifetime
- **Adaptable** and safe for human/mammal applications
- **Durable** for harsh military environments

## Current Applied Technologies



### POWRS

Pediatric Opioid Withdrawal Monitor (CDC/NCCDPHP)



### SWIM3

ECG Monitor for Marine Mammals (Navy)

## Extended Physiologic Interfacing Platform™

## Potential Applications

- Wearable sensors for human performance
- Monitors for remote patient care
- Portable devices for warfighter injury prediction
- Wireless status monitoring
- Extended hazard dosimetry
- Detection and diagnostics



### WAHTER

Impedance-based hydration monitor (Navy)



### QUPID

Handheld measurement tool for tissue mechanical properties (DHA)